

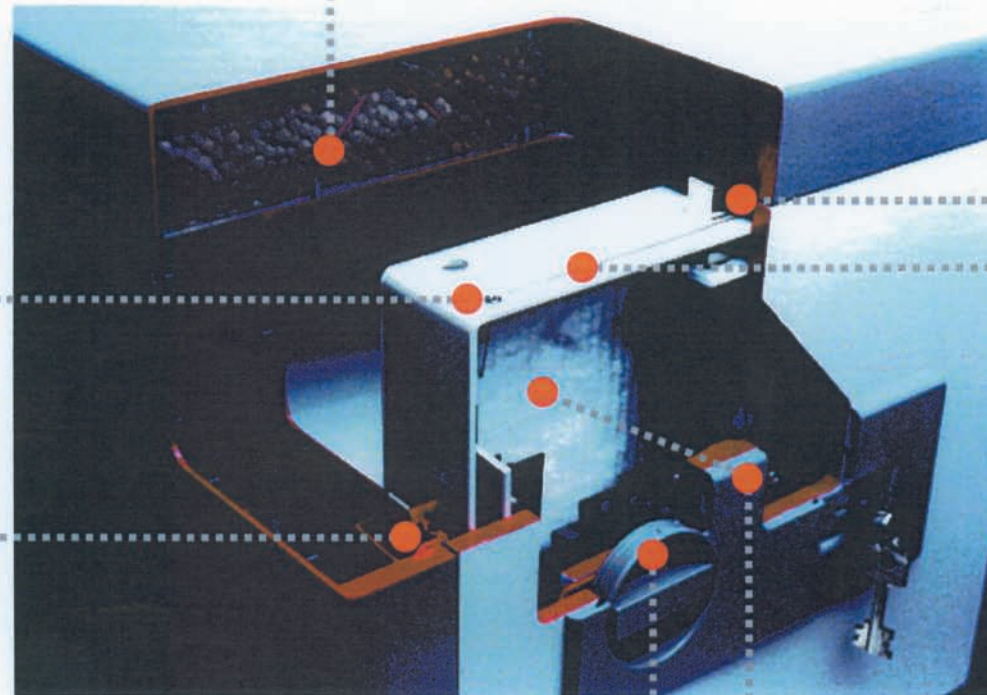
# Important security characteristics of the Diplomat series MTD 34 – 149 and WT 10/4 – 10/8



The freestanding safes have welded angular steel (45°) in the whole body (at the side, the back, the top and the bottom) against flame cutting tools.

In addition to the square bolts there are two emergency relockers on top and on the bottom which cannot be pushed back once they are locked into place.

The freestanding safes furthermore have diagonal armoured plates in the body in front of all bolts (at the side, the top and the bottom) and emergency locking bolts.

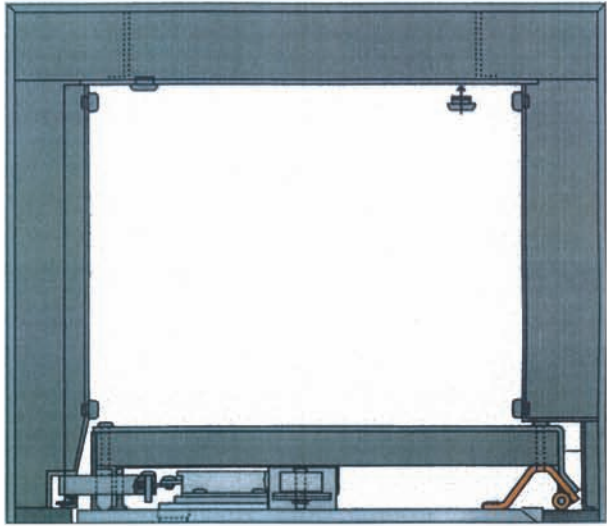


With two non-visible special pins in each square bolt for extra protection against flame-cutting

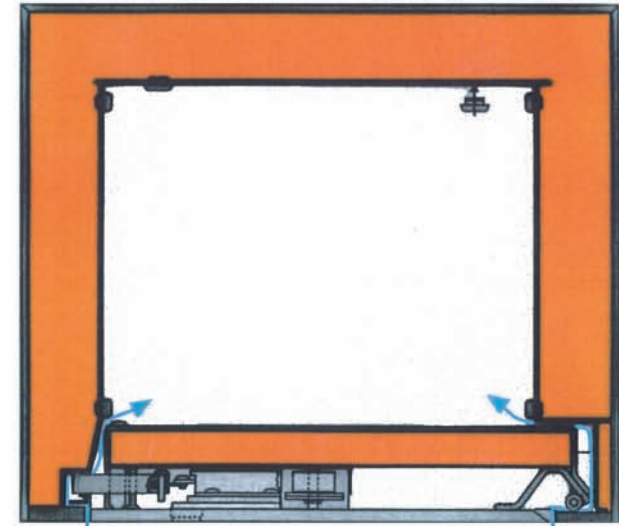
With a stainless steel cable protecting all important parts, e.g. in front of the bascule square bolts (on the top and the bottom). The two emergency locking bolts are connected with the steel cable.

Additional steel balls in the door in front of the combination lock for extra drilling protection and as an additional emergency locking mechanism.

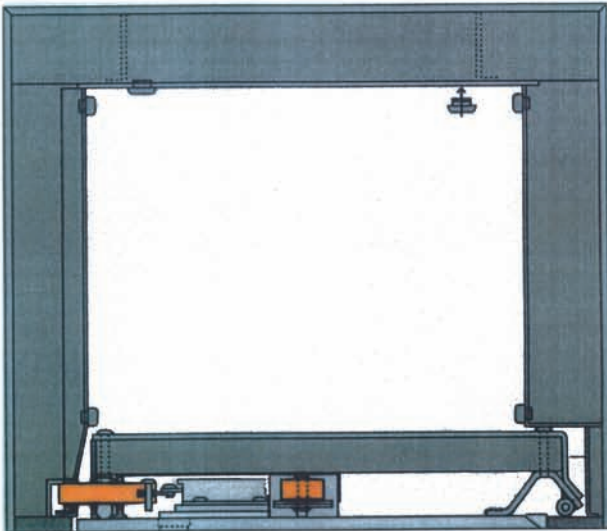
With additional armoured plates in the door in front of the emergency relockers.



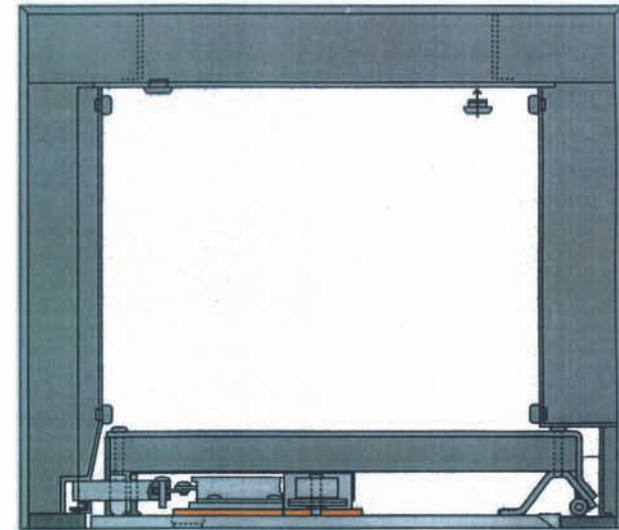
all over gripping hinge



fumes diversion all over fire protection fumes diversion



three-sided locking through strong square bolts



locking system specially protected against drilling by a steel manganese plate